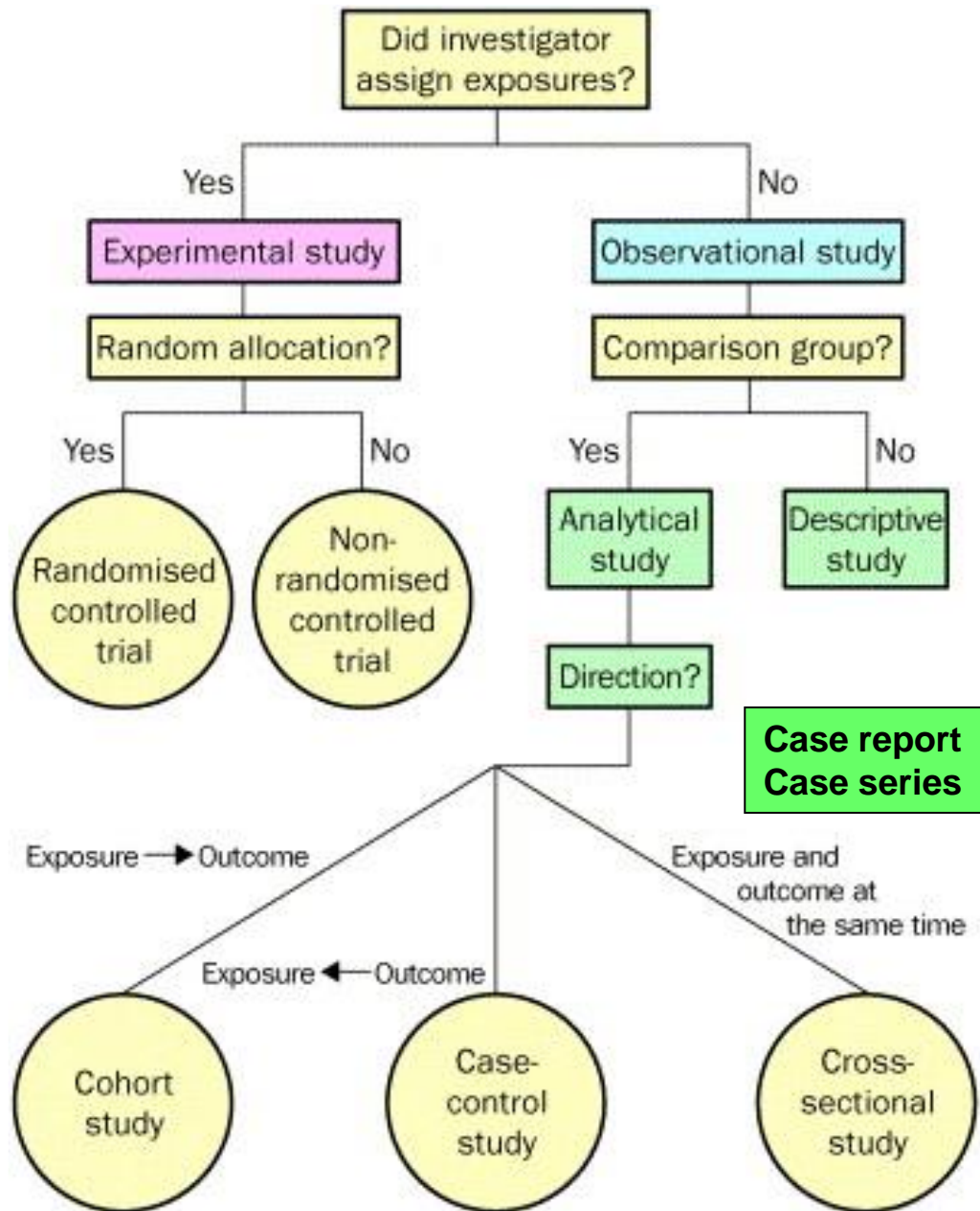
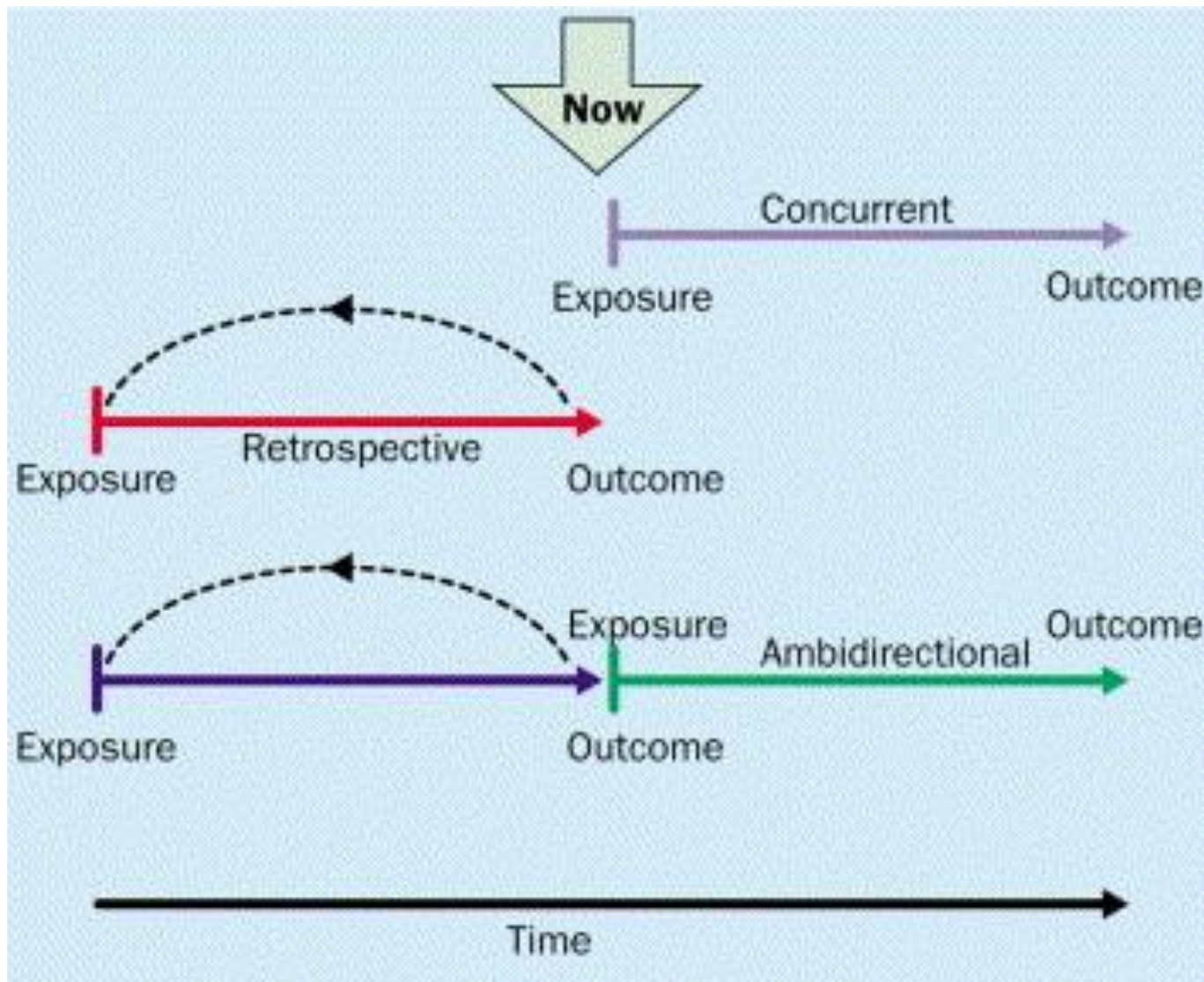


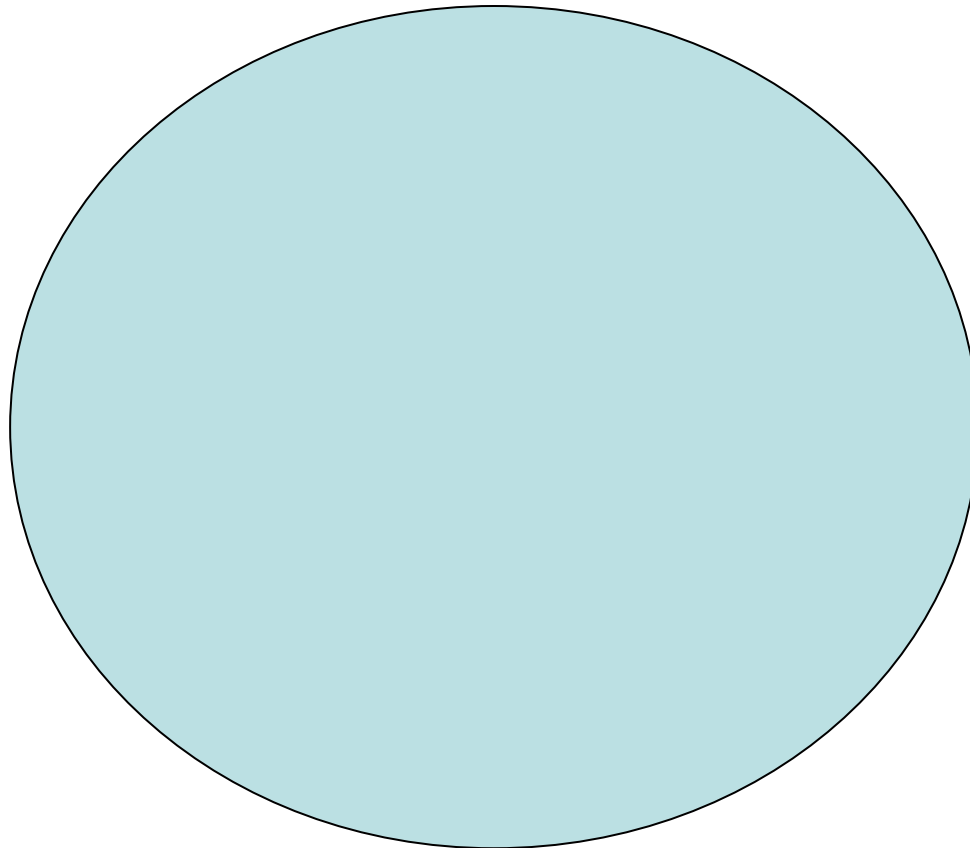
Statistics is about
finding the truth



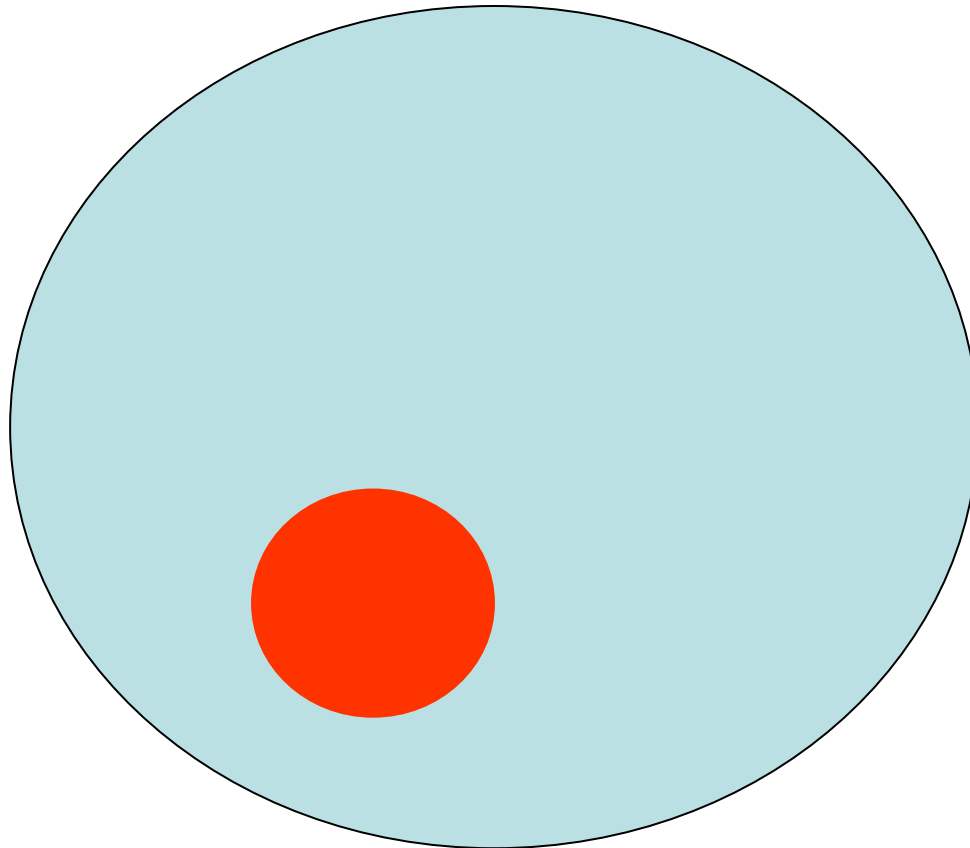
Is a cohort study always prospective?



Is a subgroup representative of the
general population?



Is a subgroup representative of the
general population?



We have to estimate
the chance of finding the truth

Why is $p < 0.05$?

Type I Error



Type II Error



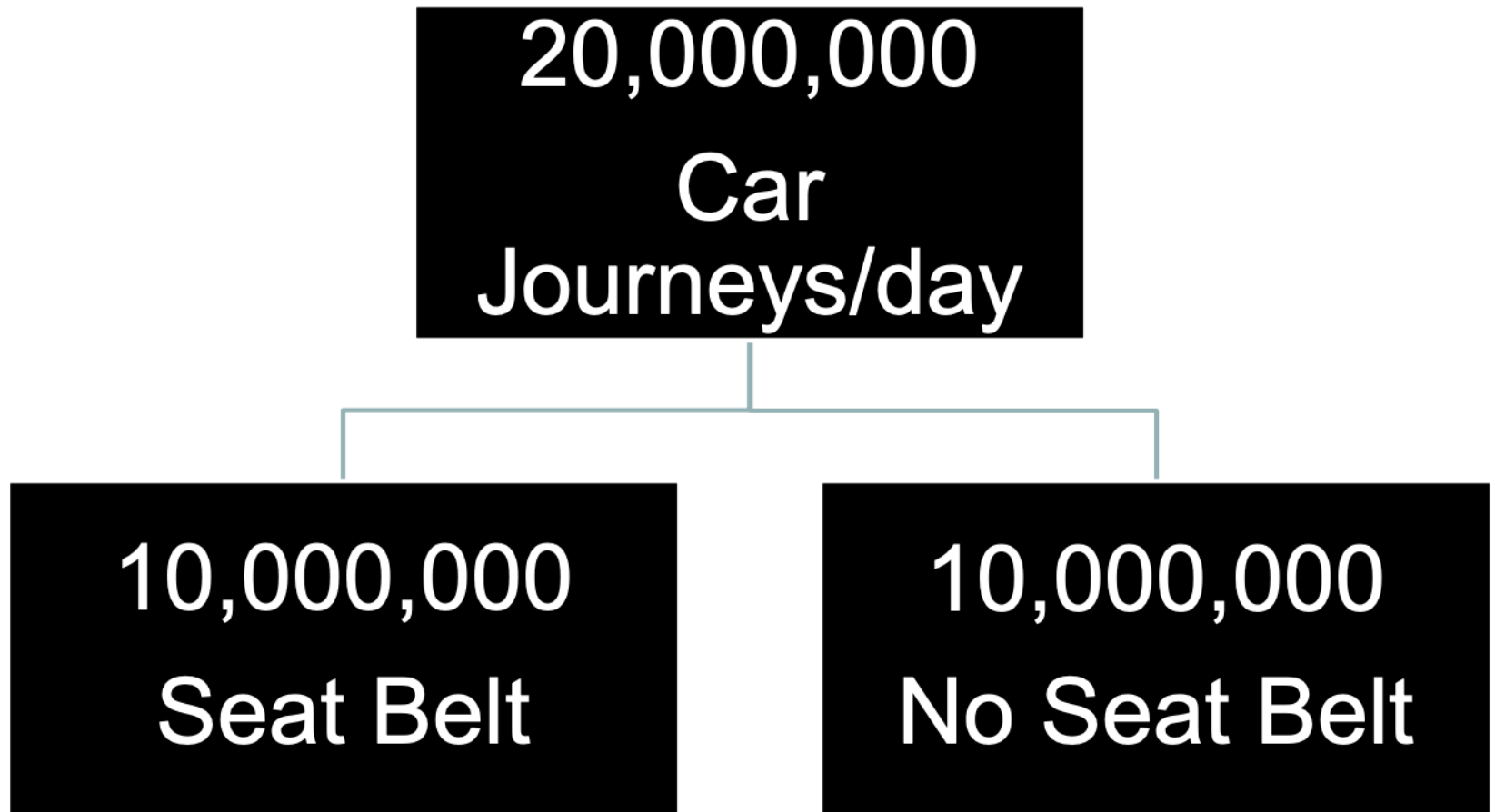
Why is $p < 0.05$?

? Because we have 5 fingers

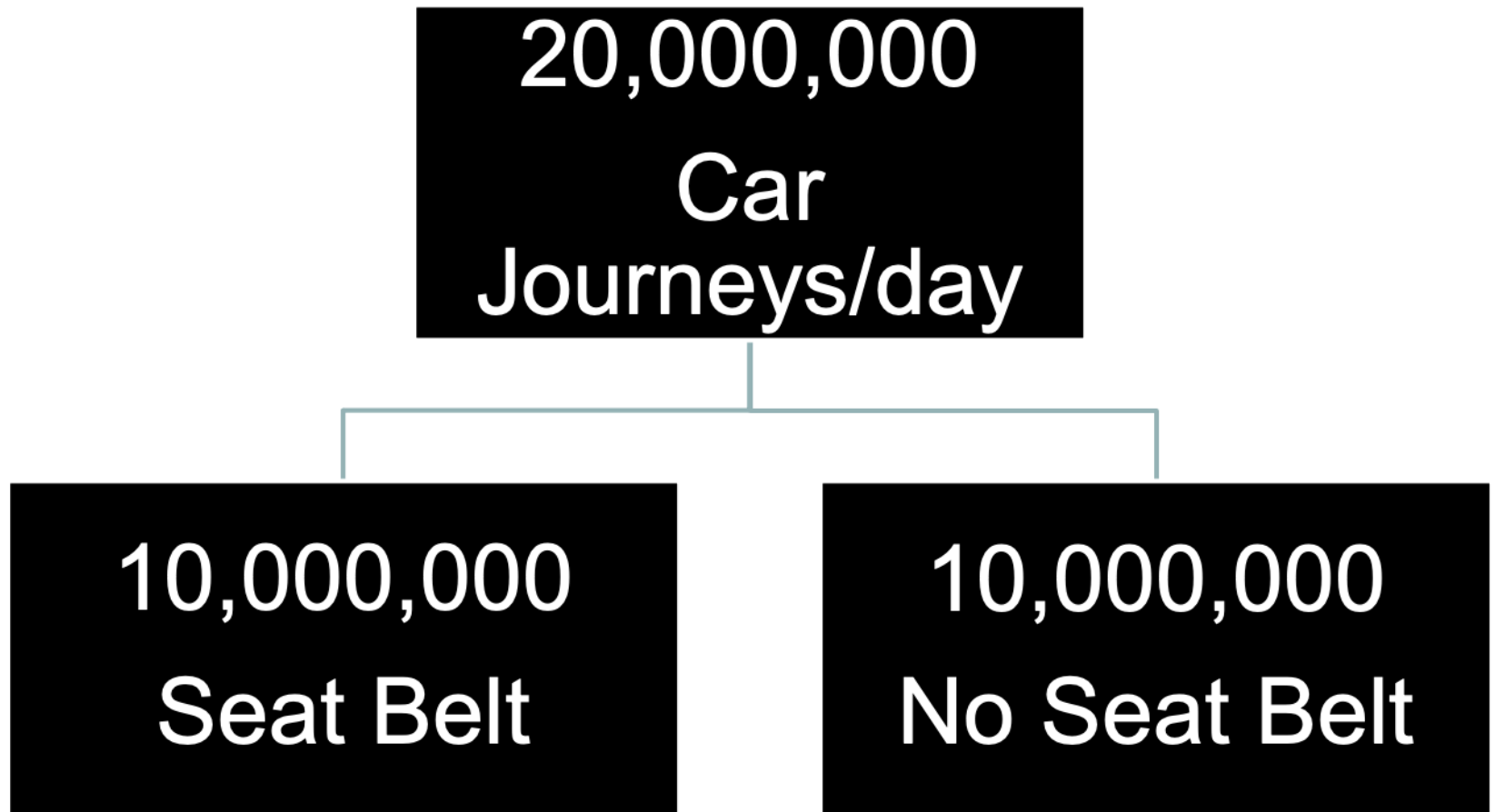


Prevalence is as important
as population size

RCT: Seat belt vs No seat belt



RCT: Seat belt vs No seat belt



Conclusions?

- Seat belts do not save lives, and should be abandoned as they limit the comfort and mobility of the passenger.

Conclusion

- This study is underpowered to determine the effect of seat belts on saving lives.